

# 2020-2021 REOPENING Update

REAPERTURA Ultimas Noticias

**校园重新开放讯息更新**

BOT Meeting - Reunión de la junta - 董事会会议

February 4, 2021

4 de febrero de 2021

2020年2月4日



Massachusetts Department of Public Health | COVID-19 Dashboard  
Today at a Glance

Released on: February 4, 2021  
Data as of: February 3, 2021  
Caution: recent data may be incomplete

Navigation

Today's Overview

Overview Trends

COVID-19 Cases

COVID-19 Testing

Hospitalization

COVID-19 Deaths

Higher Ed & LTCF

Patient Breakdown

City and Town

Resources

Data Archive

### Cases

**Confirmed Cases**  
Today there were **2,602** new, confirmed cases reported bringing the total to **507,166** total confirmed cases.

**Cases by age during the last two weeks**  
\*Data updated weekly

Age Group	Cases
0-19 Years	9,817
20-29 Years	8,504
30-39 Years	7,001
40-49 Years	6,362
50-59 Years	6,897
60-69 Years	4,754
70-79 Years	2,474
80+ Years	1,823

**Probable Cases**  
Today, there were **202** new, probable cases reported bringing the total to **26,755** total probable cases.

**Estimated Active Cases**  
There are an estimated **61,864** currently active COVID-19 cases.

### Testing

**Tests Reported**  
There were **81,286** new COVID-19 molecular tests reported, bringing the cumulative total to **13,955,444** tests.

**Turn Around Time**  
The current turn around time for a molecular test is **1.90** days.

**Percent Positivity**  
The 7-day average of percent positivity is **3.29%**.

### Hospitalizations

**Hospitalizations**  
There are **1,554** patients hospitalized for COVID-19.

**ICU & Intubated Patients**  
There are **335** patients in Intensive Care Units (ICU) and **208** patients are intubated.

**Average Age of Patients**  
The average age of patients who were hospitalized for COVID-19 was **68** years old.

### Deaths

**Confirmed Deaths**  
There were **74** new, confirmed deaths reported. There have been **14,489** confirmed deaths in total.

**Probable Deaths**  
There were **2** new, probable deaths reported. There have been **295** probable deaths in total.

# DPH Health Data – top 15 sending towns in region of service

<u>Sending town/city</u> <i>Envío pueblo / ciuda</i> 寄送城镇	<u>County</u> <i>Condado</i> 县	<u>Percentage of enrollment per town 10/2/20</u> <i>Porcentaje de matrícula por municipio 2/10/20</i> 每个城镇的入学百分比10/2/20	<u>Cumulative percentage of total enrollment</u> <i>Porcentaje acumulado de la matrícula total</i> 累计入学率	<u>DPH 1/7/2021, 19 red, 4 yellow</u>	<u>1/28/2021, 15 red, 12 yellow</u>
Amherst	Hampshire	21.43%	21.43%	Yellow	Yellow
Springfield	Hampden	15.36%	36.79%	Red	Red
Northampton	Hampshire	8.39%	45.18%	Yellow	Yellow
South Hadley	Hampshire	7.50%	52.68%	Red	Yellow
Holyoke	Hampden	6.25%	58.93%	Red	Red
Hadley	Hampshire	5.89%	64.82%	Red	Red
Easthampton	Hampshire	4.46%	69.29%	Red	Yellow
Belchertown	Hampshire	4.46%	73.75%	Red	Red
Chicopee	Hampden	3.39%	77.14%	Red	Red
Greenfield	Franklin	3.39%	80.54%	Yellow	Yellow
Montague	Franklin	2.86%	83.39%	Red	Yellow
Granby	Hampshire	1.96%	85.36%	Red	Red
Deerfield	Franklin	1.79%	87.14%	Green	Yellow
Agawam	Hampden	1.61%	88.75%	Red	Red
Westfield	Hampden	1.25%	90.00%	Red	Red

Datos de salud del DPH:  
las 15 ciudades  
emisoras principales en  
la región de servicio

DPH健康数据-本校学  
生分分布区域中排名前  
15位的城镇

# When can I get a **COVID-19** vaccine in MA?



## PHASE ONE

In order of priority

- Clinical and non-clinical healthcare workers doing direct and COVID-facing care
- Long term care facilities, rest homes and assisted living facilities
- Police, Fire and Emergency Medical Services
- Congregate care settings (including corrections and shelters)
- Home-based healthcare workers
- Healthcare workers doing non-COVID-facing care  
**School nurses**

**School Psychologist, Speech/Language**

**December - February**

Estimated timeframes



## PHASE TWO

In order of priority

- Individuals with 2+ comorbidities (high risk for COVID-19 complications)
- Early education, **K-12**, transit, grocery, utility, food and agriculture, sanitation, public works and public health workers
- Adults 65+ **& 75+**
- Individuals with one comorbidity

**February - April**



## PHASE THREE

Vaccine available to general public

**April - June**

For more information on vaccine distribution visit [Mass.gov/COVIDvaccine](https://www.mass.gov/COVIDvaccine)



# What to Expect In The School Building for the Hybrid Model

# Hybrid Model – In Person Overview

## Hybrid Model

- At most, there will be half of the students in our building each week, and each week we will alternate the cohorts. This alternating week model was most popular in earlier parent and staff surveys.
- We are calling these hybrid weekly cohorts “W1 or W2”. We will still have the grade level “A, B, C” cohorts (e.g. 2A, 7C, 10A etc.)
- Covid safety precautions and rules are in effect throughout the building.
- *Note: there will also be students who stay at home doing the Remote Model all semester.*

## School hours are

- Morning drop off 8:10-8:25 am.
- K-5 classes start at 8:30 am and dismissal is at 2:30 pm.
- MS and HS classes start at 8:30 am and dismissal is at 3:15 pm.

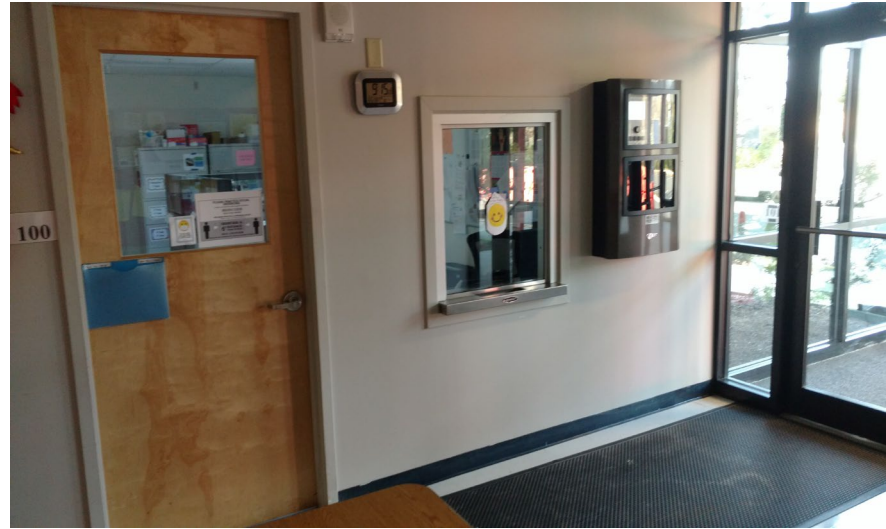
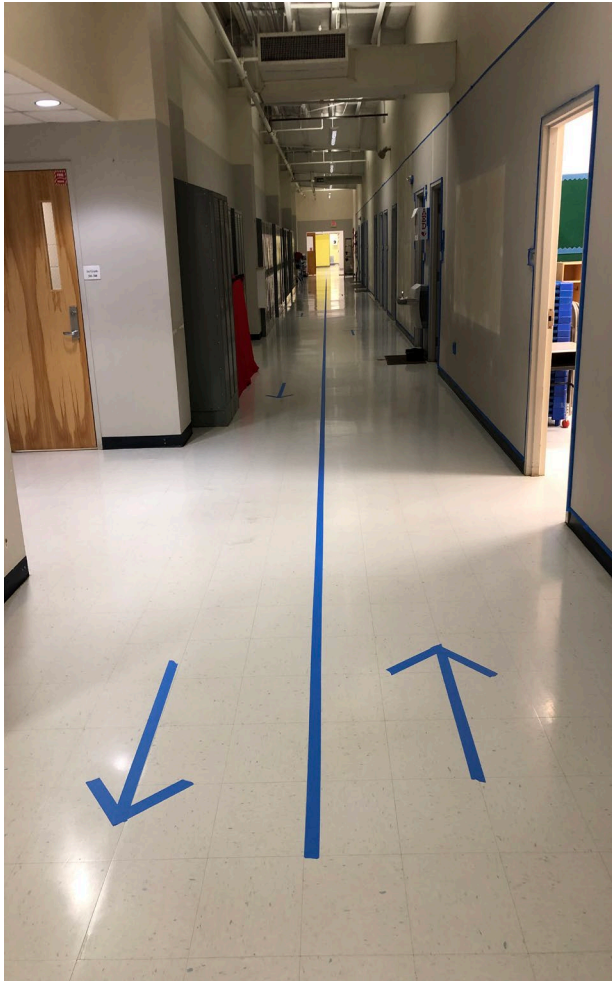


Students and teachers will need to get used to seeing each other in masks. Students may not recognize their teachers initially because they won't look like they currently do in the remote classes where entire faces are visible.

Everyone in the building is required to wear a face mask at all times so any remote students will need to get used to seeing their teachers wearing masks too.







Restricted access to building. Shared staff areas (e.g. offices, staff prep rooms) also have restricted access. Parent meetings remain virtual for this school year.

Controlled traffic flow for social distancing. No student socializing in halls. Most bulletin boards removed.

#### More Building Rules

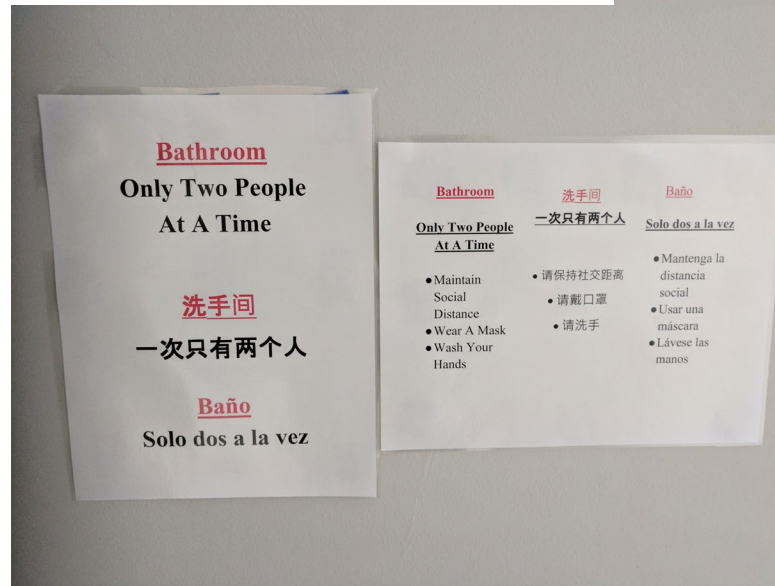
- Face masks at all times.
- Social distancing – minimum 6 ft
- Hand washing / hand sanitizer – required at specific times
- Zoned use of building – i.e. no wandering.
- Student visits to nurses are escorted.
- Traffic flow controlled.

# Signs with rules and reminders for all



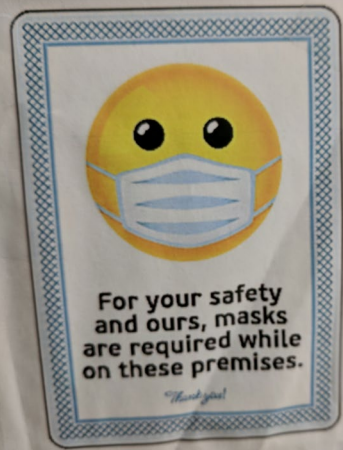
Handsanitizer in classrooms (large gallon white jug) and signs with Covid safety rules (upper right in blue).

Bathroom rules and limits on how many can use them.



# More examples of signs...

Signs for traffic flow



Masks required.



Elevator restrictions



**Rich Strong Air Conditioning**  
Heating • Ventilation • Air Conditioning  
(413) 247-0095

**IMPROVING INDOOR AIR QUALITY**  
Are members of your family more susceptible to allergies or viruses in your home?  
Have you noticed odors from pets, cooking or from your air conditioning system?  
Are you tired of seeing sunbeams or tiny floating particles in the room?  
Are static electricity shocks an issue in your home?

**BREATHE CLEANER. FRESHER AIR!**

**iWave-C**

**THE IWAVE DIFFERENCE**

- Proven technology – over 100,000 installations
- Actively purifies the whole house!
- Kills mold, bacteria and viruses
- Reduces allergens, odors, smoke and particles
- Maintenance free
- No replacement parts
- Self-cleaning design
- Installs in any duct air conditioning system
- Three-year warranty

**POLLUTED AIR**    **CLEAN AIR**

DUST  
ALLERGENS  
SMOKE  
MOLD  
VIRUSES

Scan here to watch the iWave video [www.iwaveair.com](http://www.iwaveair.com)

The Center for Disease and Control (CDC) is reporting in an outbreak of respiratory disease caused by a novel coronavirus that was first detected in China and which has now been detected in 26 locations internationally, including in the United States. The disease is called Coronavirus disease (COVID-19). At this time, COVID-19 virus has not been made available for testing however, the iWave family of products have been proven through independent lab testing to significantly reduce a wide variety of pathogens and viruses similar to coronavirus in the breathing zone and on hard non-porous surfaces. It is important to note that we make no medical claims.

**iWave AIR PURIFIERS**

Air purifier ionizer info



Partitions between sinks to help keep students apart and reduce splashing each other.

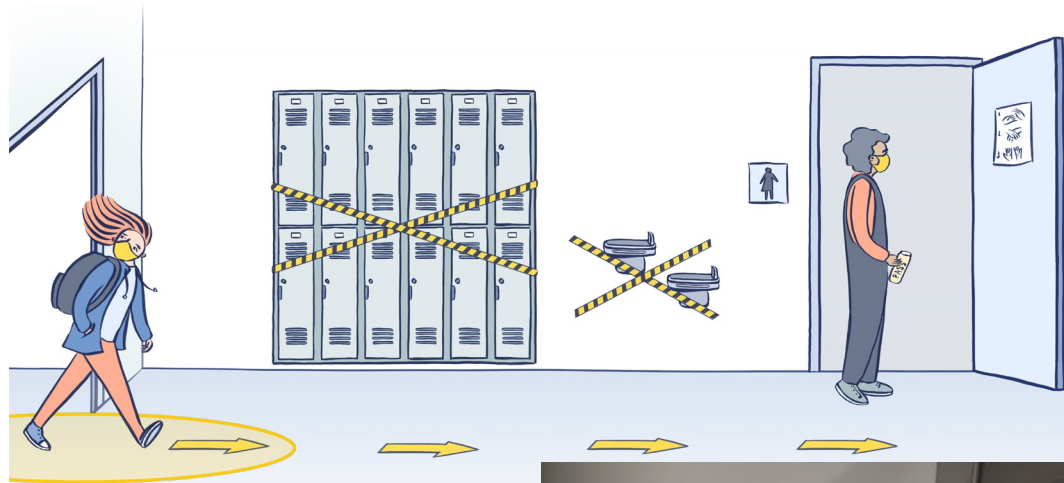


Air dryers off to prevent blowing germs around. People will use paper towels instead. Note: this guideline was recently relaxed but we will keep them off.



Special trash cans for used masks are throughout the building.





More hall monitoring.

No use of lockers to reduce hall traffic and cleaning.

No drinking fountains where students drink directly from them.

Water bottle refillers are ok.



# Everyone must be seated at their assigned chair and desk

Individual desks. No shared tables.

Assigned seats. No “first come first serve” seating or spontaneous change to seating.

6 feet apart from center to center of desk.



This photo is in a Kindergarten room but similar rules apply up to grade 12.

All desks facing same direction towards the front of room.

Quiet lunch is at their desks with minimal talking since masks are off.

11-12 students per classroom.

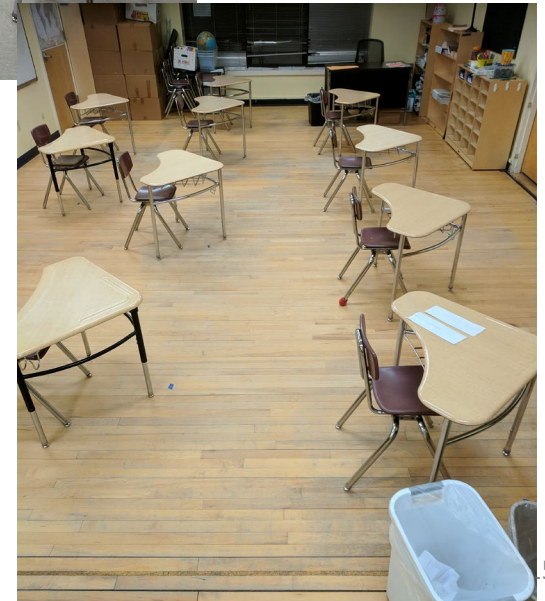
Desks can not be moved. Note: tape marker on floor.

# Classrooms



1<sup>st</sup> Grade

Kindergarten – no naps since no space for nap mats to spread out. In K-5, students are in one room all day.



3<sup>rd</sup> Grade



Elementary, Middle and High School rooms look alike....only difference is height of the desks and chairs.

Classroom windows may be open at times. Rooms without windows that open, have a HEPA air purifier.



Classrooms have less other furniture because space is needed for social distancing.

Teachers desks are 6 feet from students.





# Re-purposing space

The library is closed for browsing by every grade. Library books can still be borrowed but will be delivered to classrooms. Library classes will be done in the K-5 classrooms.

The library is being used as a classroom.



# Health Office

Nurses main room is for symptomatic students. Another office will be used for routine visits. 3 of 4 beds have wall dividers to isolate sick students. The 4<sup>th</sup> bed has privacy curtains and is for cases where we may need more room to access the student.

Nurses will be in full PPE.



Nurses will call parents/guardians or student's emergency contacts to pick up the sick child within 45 minutes. Please make sure you have emergency contacts that are local.

Sick students can not go home on the school bus or in carpools.

Symptomatic students in isolation areas.

# School Nurses will be in full PPE

Students may not recognize our nurses because they will be wearing full PPE. Show your child(ren) this photo so they aren't scared of the nurses.

Child(ren) should know that the PPE may:

- Change the sound of the nurses voices.
- Hide the nurses faces.
- Smell antiseptic.
- Feel cold.



N95 or KN95 mask (or equivalent).

Transparent face shield.

Gloves.

Gown to protect clothing.

Walkie talkie to communicate with other staff.

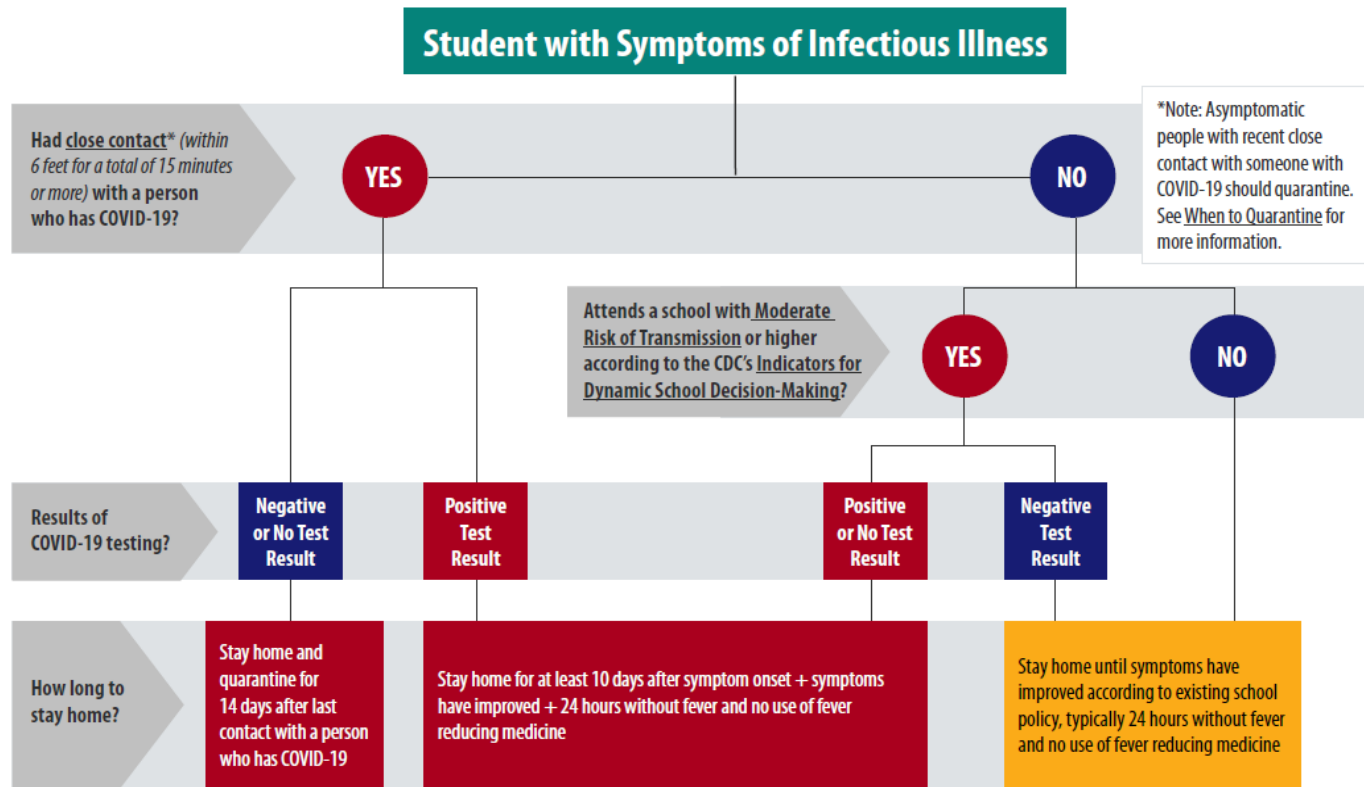
If you think your child is getting sick or is sick, do not bring them to school. Please keep them home! We do not have a large health office, nor can we afford to have our staff getting sick.

# COVID-19 SCHOOL SYMPTOM SCREENING FLOWCHART

This CDC symptom screening flowchart shows what steps will be taken when a student has symptoms in school. There are many other detailed steps.

We are required to notify parents if their child is a close contact (within 6 feet for 15 minutes or more) of a positive case as soon as possible after we learn of the positive case.

We will only tell parents when there is a positive case - no other confidential identifiable information is released.



# Timeline – Cronología - 时间表

## February 2021

- Continuing operational changes to prepare for A/B hybrid alternating week model
- Parent survey –students remote/hybrid, deadline extended to 2/3, calling parents who did not respond
- Student Cohorts – finalize by 2/10 who is hybrid or remote, priority groups per DESE/at risk.
- Schedules – sent to parents 1/22
- Parent Q&A sessions 1/26 and 2/2.
- FAQ from Parent Q&A sessions sent 2/4.
- Technology – livestream cameras arrived and being installed and starting testing
- Staffing – addressing concerns and monitoring vaccination rollout
- Evaluating target start date change

Thank You   Gracias   谢谢