

# 2020-2021 REOPENING Update

REAPERTURA Ultimas Noticias

校园重新开放讯息更新

BOT Meeting - Reunión de la junta - 董事会会议

March 4, 2021

4 de marzo de 2021

2020年3月4日



Massachusetts Department of Public Health | COVID-19 Dashboard  
Today at a Glance

Released on: February 4, 2021  
Data as of: February 3, 2021  
Caution: recent data may be incomplete

- Navigation
- Today's Overview
- Overview Trends
- COVID-19 Cases
- COVID-19 Testing
- Hospitalization
- COVID-19 Deaths
- Higher Ed & LTCF
- Patient Breakdown
- City and Town
- Resources
- Data Archive

### Cases

**Confirmed Cases**  
Today there were **2,602** new, confirmed cases reported bringing the total to **507,166** total confirmed cases.

**Cases by age during the last two weeks**  
\*Data updated weekly

0-19 Years	9,817
20-29 Years	8,504
30-39 Years	7,001
40-49 Years	6,362
50-59 Years	6,897
60-69 Years	4,754
70-79 Years	2,474
80+ Years	1,823

**Probable Cases**  
Today, there were **202** new, probable cases reported bringing the total to **26,755** total probable cases.

**Estimated Active Cases**  
There are an estimated **61,864** currently active COVID-19 cases.

### Testing

**Tests Reported**  
There were **81,286** new COVID-19 molecular tests reported, bringing the cumulative total to **13,955,444** tests.

**Turn Around Time**  
The current turn around time for a molecular test is **1.90** days.

**Percent Positivity**  
The 7-day average of percent positivity is **3.29%**.

### Hospitalizations

**Hospitalizations**  
There are **1,554** patients hospitalized for COVID-19.

**ICU & Intubated Patients**  
There are **335** patients in Intensive Care Units (ICU) and **208** patients are intubated.

**Average Age of Patients**  
The average age of patients who were hospitalized for COVID-19 was **68** years old.

### Deaths

**Confirmed Deaths**  
There were **74** new, confirmed deaths reported. There have been **14,489** confirmed deaths in total.

**Probable Deaths**  
There were **2** new, probable deaths reported. There have been **295** probable deaths in total.

For details on the definitions of each indicator hover over the box or graph. All data included in this dashboard are preliminary and subject to change. Data Sources: COVID-19 Data

3/4/2021 per DPH:  
“Due to technical issues being experienced by the Tableau hosting platform on all of their public sites, today’s COVID-19 interactive dashboard is only intermittently available. We are working with Tableau to restore full access as soon as possible.”

# DPH Health Data – top 15 sending towns in region of service

<u>Sending town/city</u> <i>Envío pueblo / ciuda</i> 寄送城镇	<u>County</u> <i>Condado</i> 县	<u>Percentage of enrollment per town 10/2/20</u> <i>Porcentaje de matrícula por municipio 2/10/20</i> 每个城镇的入学百分比10/2/20	<u>Cumulative percentage of total enrollment</u> <i>Porcentaje acumulado de la matrícula total</i> 累计入学率	<u>1/28/2021, 15 red, 12 yellow</u>	<u>2/25/2021, 3 red, 17 yellow</u>
Amherst	Hampshire	21.43%	21.43%	Yellow	Yellow
Springfield	Hampden	15.36%	36.79%	Red	Red
Northampton	Hampshire	8.39%	45.18%	Yellow	Yellow
South Hadley	Hampshire	7.50%	52.68%	Yellow	Yellow
Holyoke	Hampden	6.25%	58.93%	Red	Yellow
Hadley	Hampshire	5.89%	64.82%	Red	Yellow
Easthampton	Hampshire	4.46%	69.29%	Yellow	Yellow
Belchertown	Hampshire	4.46%	73.75%	Red	Yellow
Chicopee	Hampden	3.39%	77.14%	Red	Red
Greenfield	Franklin	3.39%	80.54%	Yellow	Yellow
Montague	Franklin	2.86%	83.39%	Yellow	Green
Granby	Hampshire	1.96%	85.36%	Red	Yellow
Deerfield	Franklin	1.79%	87.14%	Yellow	Grey
Agawam	Hampden	1.61%	88.75%	Red	Yellow
Westfield	Hampden	1.25%	90.00%	Red	Yellow

Datos de salud del DPH:  
las 15 ciudades  
emisoras principales en  
la región de servicio

DPH健康数据-本校学  
生分分布区域中排名前  
15位的城镇

# When can I get a **COVID-19** vaccine in MA?



## PHASE ONE

In order of priority

- Clinical and non-clinical healthcare workers doing direct and COVID-facing care
- Long term care facilities, rest homes and assisted living facilities
- Police, Fire and Emergency Medical Services
- Congregate care settings (including corrections and shelters)
- Home-based healthcare workers
- Healthcare workers doing non-COVID-facing care  
**School nurses**

**School Psychologist, Speech/Language**

**December - February**

Estimated timeframes



## PHASE TWO

In order of priority

- Individuals with 2+ comorbidities (high risk for COVID-19 complications)
- Early education, **K-12**, transit, grocery, utility, food and agriculture, sanitation, public works and public health workers
- Adults 65+ **& 75+**
- Individuals with one comorbidity

**February - April**

**As of 3/3, DPH says K-12 signups begin 3/11**



## PHASE THREE

Vaccine available to general public

**April - June**



For more information on vaccine distribution visit [Mass.gov/COVIDvaccine](https://www.mass.gov/COVIDvaccine)

# DESE Updates in last month

- 2/11 - New transportation guidelines.
- 2/23 - Announcement there will be revision to Structured Learning Time guidelines.
- 3/1 - New indoor singing (music class) guidelines.
- 3/5 BESE Emergency Approval to 2/23 announcements so there will be more changes to DESE and DPH guidelines.

# K-12 Hybrid Model – Full day

## Robust Hybrid Model

- Half of the K-12 students in school each week, and we will alternate the cohorts weekly. This alternating week model was most popular in earlier parent and staff surveys.
- Hybrid weekly cohorts are “W1 or W2”. We will still have the grade level “A, B, C” cohorts (e.g. 2A, 7C, 10A etc.)
- Covid safety precautions and rules are in effect throughout the building.
- *Note: there will also be students who stay at home doing the Remote Model all semester.*

## School hours are

- Morning drop off 8:10-8:25 am.
- K-5 classes start at 8:30 am and dismissal is at 2:30 pm.
- MS and HS classes start at 8:30 am and dismissal is at 3:15 pm.

# Classrooms

Elementary, Middle and High School rooms look alike....only difference is height of the desks and chairs.

Classroom windows may be open at times. Rooms without windows that open, have a HEPA air purifier.

Currently using 6 feet distancing.

Building HVAC – all have MERV13 filters, air purifying ionizer system.





# Technology to Connect Remote and In person

## Goals:

- Remote and In person cohorts have comparable high quality program
- Community building

## MS/HS daily use, ES as needed

- 1 to 1 program
- Headsets with individual mics
- Meets and livestream cameras





# New Protocols – revised for Covid safety

Arrival Protocols

Bathroom Protocol

Behavior Intervention Protocol

Bus Protocol

Calling out/Subbing Protocol

Classroom Cleaning Protocol

Copy Room Protocol

Daily Self Screening Protocol

Dismissal Protocols

Exposure/Quarantine Protocol

Front Office Protocol

Hallway/Transition/Stairwells Protocol

Handwashing Protocol

Kitchen Protocol

LapTop/Materials borrowed from school  
Protocol

Library Protocol

Mask Protocol

Massachusetts Travel Order Protocol

Nurse Visit Protocol

Outdoor Recess/Movement Break Protocol

Peace Room Protocol

Staff Lunch Protocol

Student Lunch Protocol

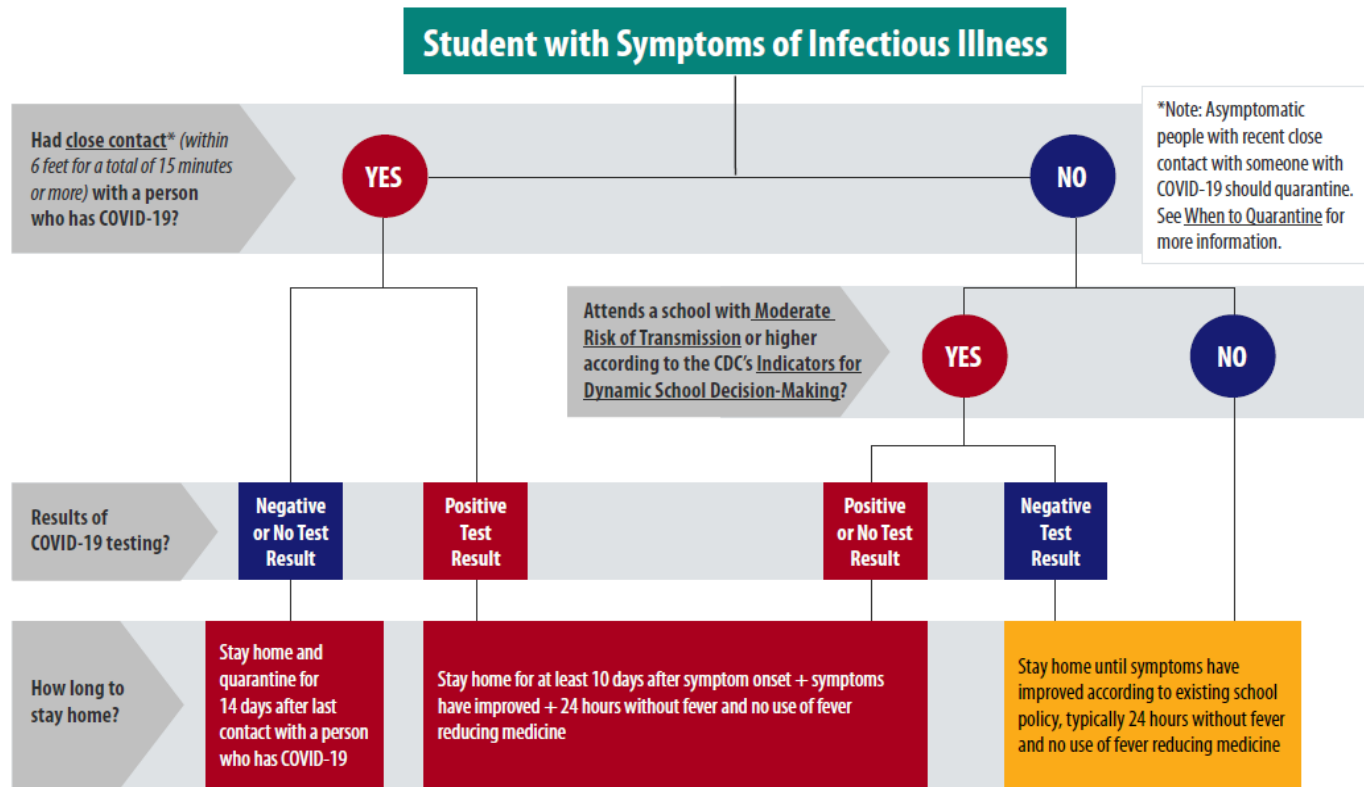
Walkie Talkie Protocol

# COVID-19 SCHOOL SYMPTOM SCREENING FLOWCHART

This CDC symptom screening flowchart shows what steps will be taken when a student has symptoms in school. There are many other detailed steps.

We are required to notify parents if their child is a close contact (within 6 feet for 15 minutes or more) of a positive case as soon as possible after we learn of the positive case.

We will only tell parents when there is a positive case - no other confidential identifiable information is released.



# Timeline – Cronología - 时间表

## March 2021

- 3/1 - 11<sup>th</sup> Grade SAT done!
- Continuing operational changes to prepare for A/B hybrid alternating week model. Evaluate any new DESE guidelines, will make changes as needed.
- Student Cohorts –parents informed this week at parent-teacher conferences. Cohorts include priority at risk groups per DESE.
- Technology – livestream cameras testing for MS and HS
- Staffing – hiring for room monitors & subs
- 3/11 Staff eligible to sign up for vaccine
- 3/19 Staff PD day – no school for students
- Week of 3/22 – half PD days for staff training and IB Mock exams
- 3/29 launch date for return of students in K-12

Thank You   Gracias   谢谢