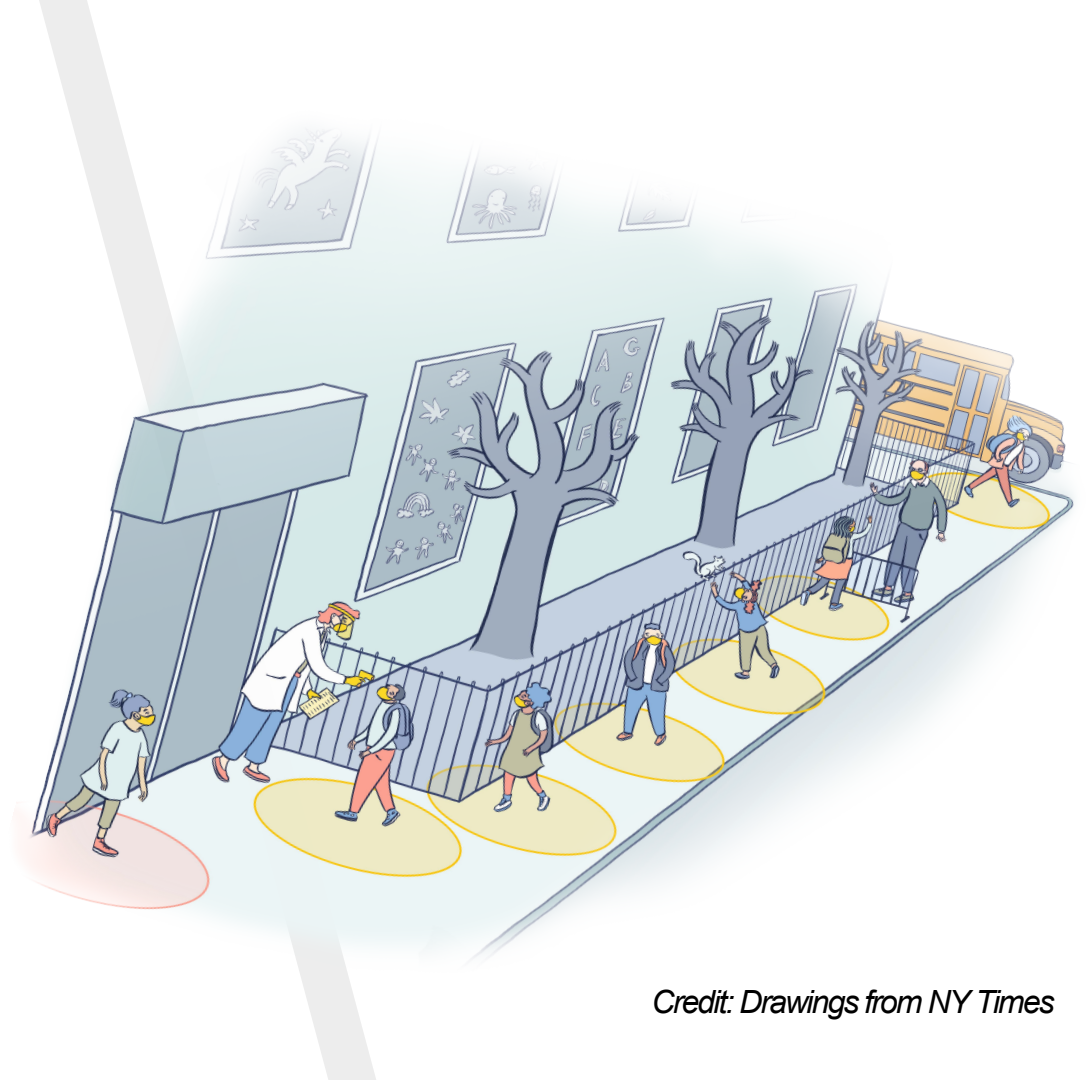


# 2020-2021 REOPENING

BOT Meeting

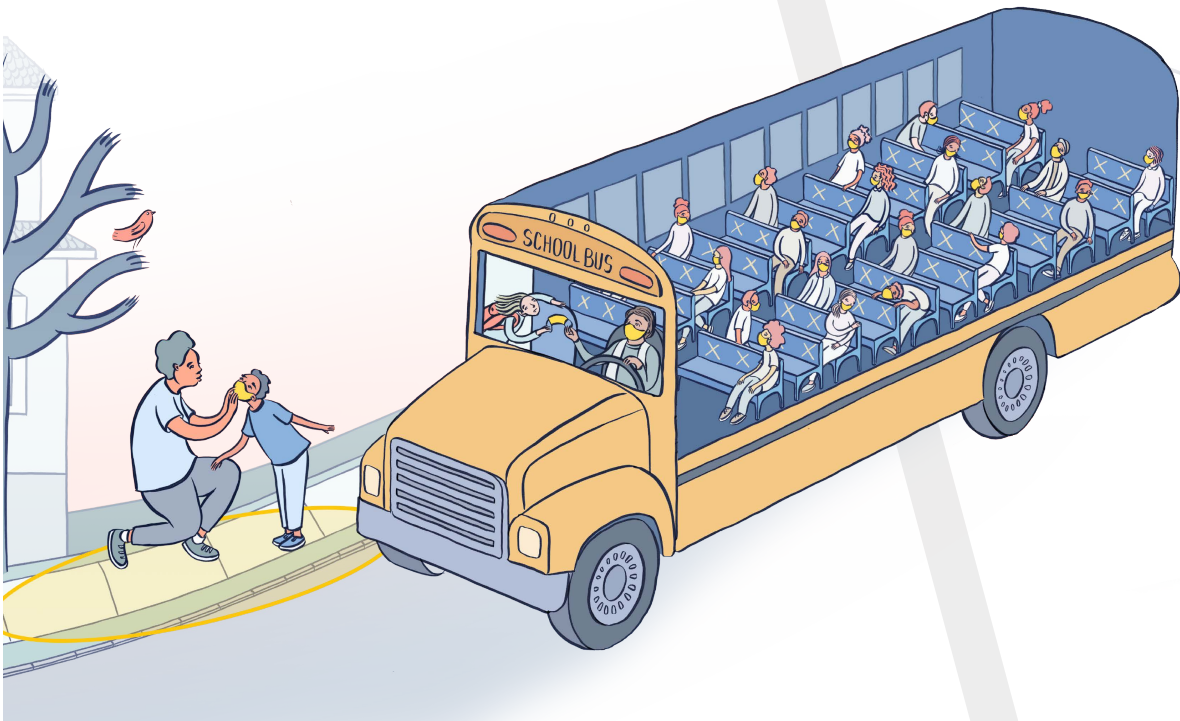
August 6, 2020



*Credit: Drawings from NY Times*

# AGENDA

- ▶ Background
- ▶ Health & Safety Update
- ▶ Learning Models
- ▶ Community Feedback
- ▶ Next Steps



# BACKGROUND

DESE recommends that all schools plan for the *safe return* to in-person settings, for as many students as possible.

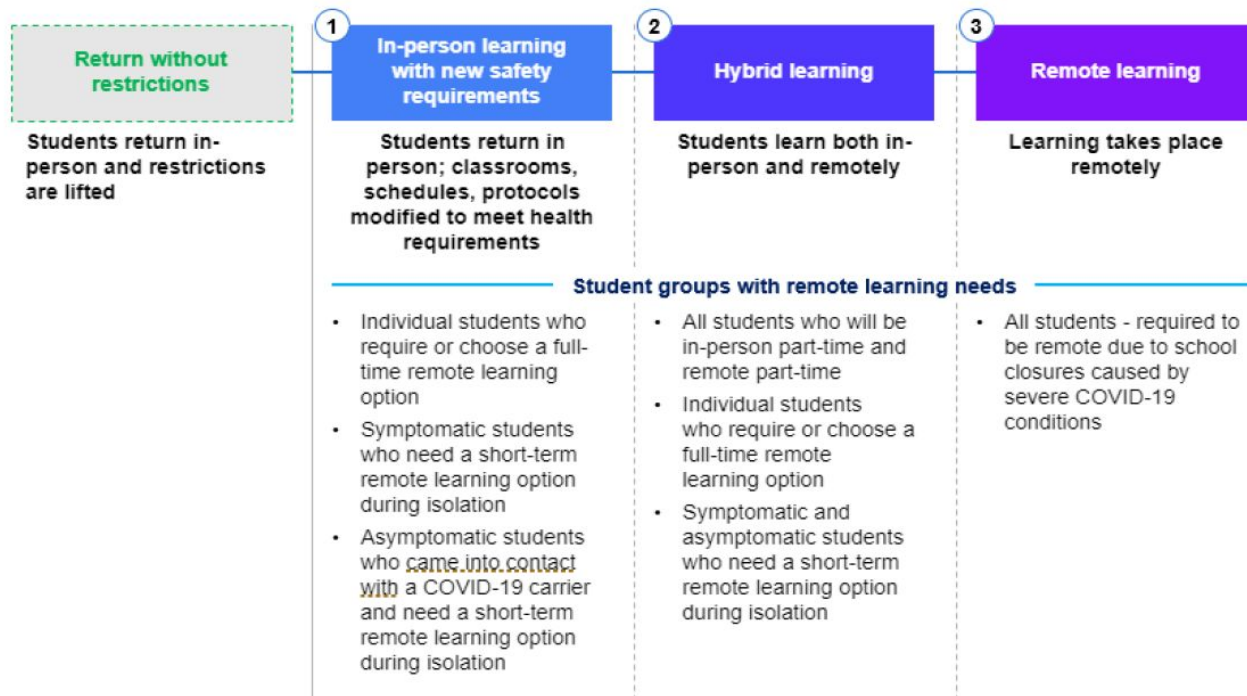
Reopening Plan should address three potential learning models: **In-Person, Remote, and Hybrid**

Planning for remote learning is necessary to be prepared

# BACKGROUND

DESE Updated Guidance - July 24, 2020

## Continuum of fall reopening models





# BACKGROUND

*DESE Revised Learning Time - July 27, 2020*

- ▶ School year is a minimum of 170 days.
- ▶ Students must receive a minimum of 850 (Elementary) and 935 (Secondary) hours of **structured learning time**:
  - ▶ Time in which students are engaged in regularly scheduled instruction, learning activities, or learning assessments within the curriculum for core subjects and/or specialties.

# BACKGROUND

## What student groups are prioritized for in-person services?

- ▶ Students with disabilities and English learners, particularly those with more intensive needs;
- ▶ Students whose parents/caregivers report that they do not have access to reliable internet or a suitable learning space at home (particularly students experiencing homelessness or housing insecurity and students in foster care or congregate care);
- ▶ Students who are significantly behind academically;
- ▶ Students who were disengaged and/or who struggled significantly during previous remote learning periods; and
- ▶ Early learners (grades PK-5).

# BACKGROUND

Key Dates:

**July 31** - Preliminary Reopening Plan made to DESE

**August 14-17** - Final Plans Submitted and Published

**August 12** - All Staff Return

**September 8\*\*** - First Day of School for students

*\*\*subject to change*

# HEALTH & SAFETY UPDATE

- ▶ PPE supplies ordered
  - ▷ Masks, hand sanitizer, alcohol wipes, gloves, etc.
- ▶ Bus capacity (DESE guidance July 22)
  - ▷ In process, met with bus company August 4
- ▶ Building
  - ▷ Cleaning on going
  - ▷ Air dryers off, drinking fountains off
  - ▷ Classroom furniture being moved into place August 11 and 12
  - ▷ All classrooms have windows
  - ▷ HVAC air purification installed
- ▶ Custodial staff increased from 4 to 5
- ▶ Nursing staff remains 2

# HEALTH & SAFETY UPDATE

## Courses with additional health and safety concerns

DESE Guidance for specific courses (Performing Arts, Visual Arts, Physical education), July 24, 2020

Course	Indoor	Outdoor	Notes
Singing, brass or woodwind instruments	Not permitted	Mask encouraged, 10 ft of physical distance	Minimize and modify sharing equipment
Non-musical theater	Mask, 6ft of distance	Mask encouraged, 6 ft physical distance	Minimize and modify sharing equipment
Physical Education	Mask, 6ft of distance	Mask 6 ft, no mask 10 ft physical distance	Minimize and modify sharing equipment
Art	Mask 3-6 ft of physical distance	Mask 3-6 ft of physical distance	Minimize and modify sharing equipment

# CORE HEALTH & SAFETY PRACTICES

For any return in-person model:

- ▶ **Self-assess** and stay at home if you are not feeling well
- ▶ **Practice good hand hygiene**
- ▶ **Face masks** required for all staff and all students in K - 12th grade.
- ▶ **3-6 feet of Physical Distancing** maintained inside classrooms and around the building, including when eating
- ▶ **Assigned seats**

# LEARNING MODELS



# **HYBRID** LEARNING MODEL

- ▶ **Students are divided into two cohorts (A/B) and follow “Week on, Week off” schedule.**
  - ▷ Model reduces class sizes overall and provides more consistency in routines and learning.
- ▶ **Three to six feet of social distancing between desks/tables in all classrooms and around the school building.**
- ▶ **Time allocation adjustments for health requirements (hand washing, mask breaks).**

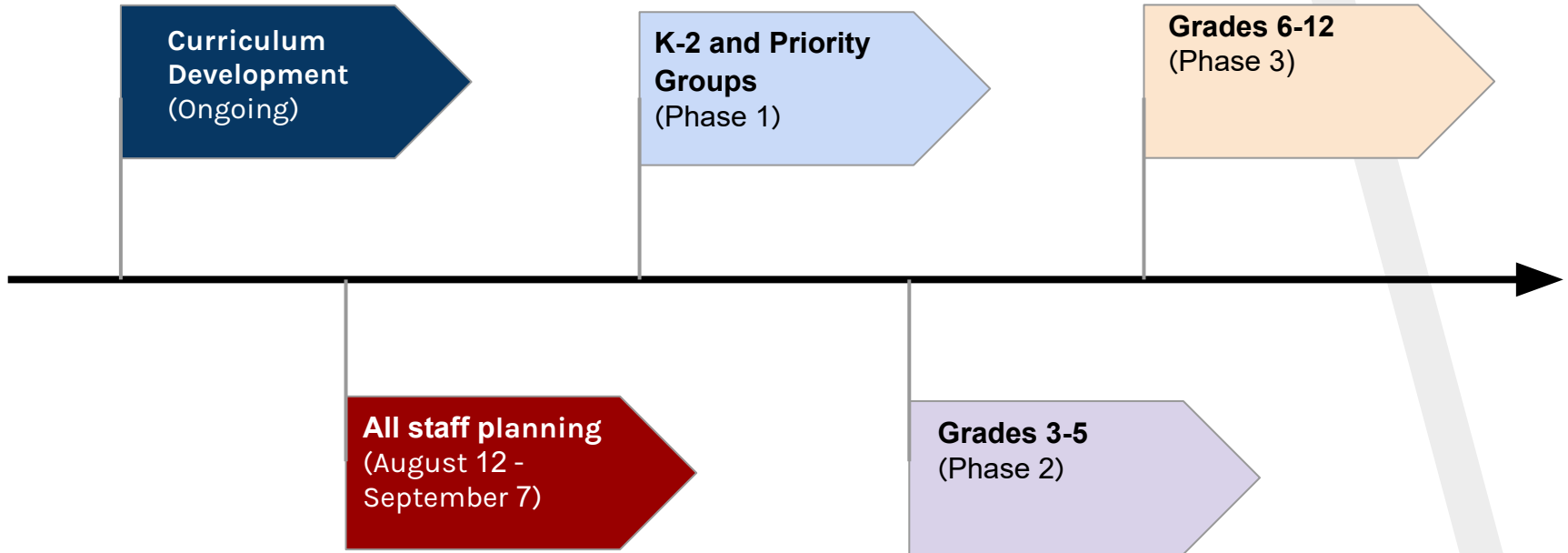


# **HYBRID** LEARNING MODEL

<b><i>“Week on, Week off” Hybrid Model</i></b>					
	<b>Monday (Week 1)</b>	<b>Tuesday</b>	<b>Wednesday</b>	<b>Thursday</b>	<b>Friday</b>
<b>Cohort A</b>	In-Person	In-Person	In-Person	In-Person	In-Person
<b>Cohort B</b>	Remote	Remote	Remote	Remote	Remote

Week 2, Cohort A and B switch modes (remote or in-person)

# HYBRID PHASED REOPENING- TBD



\*Notes: Subject to change. Phase length depends on success of previous phase. Remote learning is on starting in phase 1.

# HYBRID LEARNING MODEL

PROS	CONS
Safer alternative to full in-person	Scheduling may be difficult to reconcile between families and staff
Able to provide for social-emotional and learning needs	Staff will have to divide their planning/instructional time between in-person and remote learning
Provides in-school experience, consecutive days in-person supports socialization/interactions, building relationships, and instructional momentum	Half students in means some students won't see rest of grade

# REMOTE LEARNING MODEL

Students and staff participate in distance learning.

- ▶ Learn from March 2020 - June 2020. Students will receive regular access live synchronous and self-paced asynchronous learning.
- ▶ Students and staff will use one primary platform during remote learning (Google Classroom).
- ▶ Small groups worked well, especially for younger students.

# REMOTE LEARNING MODEL

*DESE Updated Guidance - July 24, 2020*

- ▶ Student attendance taken daily.
- ▶ Grades will be issued this year.
- ▶ MA curriculum standards.
- ▶ Student-to-student interaction, collaborative assignments/projects, teacher feedback, and other needed supports.
- ▶ Services for special education, English learners.
- ▶ Digital access for all students and staff.

# REMOTE LEARNING MODEL

PROS	CONS
Safest for health of students, families, and staff	Classroom engagement is online
Ensures in-person availability for high needs students who require these services	Children miss seeing friends in person
Consistent experience for students and staff from SY20, with opportunities for enhancement.	Requires technology and access
Learn at own pace, time outside of school for other activities	

# COMMUNITY FEEDBACK

- Parent Surveys - April, May, August
- MS/HS Students - April (by counselor)
- Staff - March, April, May, August

# COMMUNITY FEEDBACK

Parents/Guardians - May 2020

- ▶ Responses
  - K-5 parents – total responses 159 (~63% response rate)
  - MS parents – total responses 91 (~61%)
  - HS parents – total responses 63 (~63%)
- ▶ K-12 popular vote:
  - #1 Alternating weeks - half in, half out all grades
  - #1 Age-based - different grades on different days of week
  - #2 Opt in remote
  - *Note: #1 and #1 differed by one vote so treat as tie*



# COMMUNITY FEEDBACK

Staff - May 2020

- ▶ 80% of all staff/teachers responded
  - 80% teachers
  - 20% staff
- ▶ Popular vote:
  - #1 Alternating weeks - half in, half out all grades
  - #2 Age-based different grades in different days of week
  - #2 Remote Only

# COMMUNITY FEEDBACK

- ▶ Proposed
  - Alternating weeks - half in, half out all grades
    - less transistions
    - less cohorts in per week (impacts cleaning and quarantining)
  - Remote Only

# NEXT STEPS

- ▶ Analyze August survey to staff and families
- ▶ Operations
  - ▷ Cohorts (for hybrid in-person week)
  - ▷ Schedules (for hybrid and remote models)
  - ▷ Arrival/dismissal (for hybrid in-person week)
  - ▷ Transportation (for hybrid in-person week)
- ▶ Staff PD - starts August 12
- ▶ Budget / Grants
- ▶ Finalize enrollment
- ▶ Monitor DPH, DESE updates

**Thank You**

